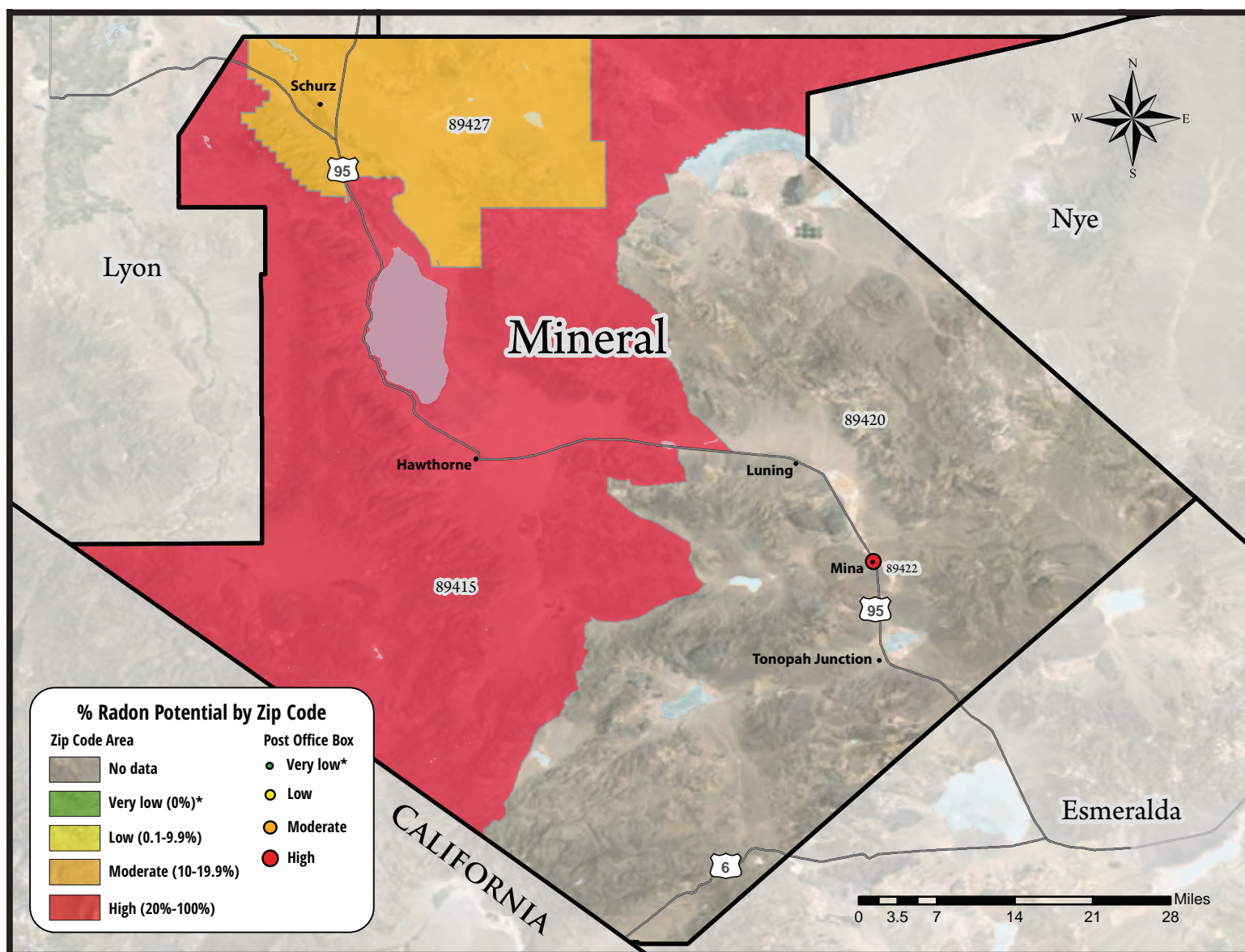


Mineral County

Radon Potential by Zip Code



Radon is a colorless, odorless, and tasteless radioactive gas that occurs naturally in most rocks and soils. It is produced by the decay of uranium in soil, rock and water. Radon is harmlessly dispersed in outdoor air, but when trapped in buildings it can build up, increasing the risk of lung cancer.

The EPA Action Level: The U.S. EPA recommends that you take action to reduce radon levels that are 4.0 pCi/l or higher.

The EPA and the U.S. Surgeon General recommends all homes be tested for radon.

FOR MORE INFORMATION

Call the Radon Hotline:
888-RADON10
Visit: www.RadonNV.com



@NevadaRadonProgram



NevadaRadonEducation

Nevada
Radon
Education Program

Mineral County Zip Codes	89415 Hawthorne	P.O. Box 89422 Mina	89427 Schurz	County Totals	
Total Number of Tests					
Valid Tests	91	3	8	102	
Less than 4 pCi/l	52	2	7	61	
4 pCi/l and greater	39	1	1	41	
% Radon Potential	42.9%	33.3%*	12.5%*	40.2%	
Range of Radon Levels in pCi/l				% of Total Tests	
≥ 0 < 4	52	2	7	61	60%
≥ 4 < 10	31	1	-	32	31%
≥ 10 < 20	5	-	1	6	6%
≥ 20 < 50	3	-	-	3	3%
≥ 50 < 100	-	-	-	-	0%
≥ 100	-	-	-	-	0%
Radon Levels by pCi/l					
Average	4.96	2.13	2.96	4.72	
Highest	31.1	4.6	10.1		

*Small sample size: more testing is needed to reference reliable radon potential for this area.

Zip codes in Mineral County with no data: 89420

**Note: Results are based on independently tested home data from program-provided kits, radon professionals and radon labs, from 1989 to June 30, 2018. When known, post-mitigation results are not included and usable results are valid tests, one per home, using the highest radon level on the lowest tested level of the home.

