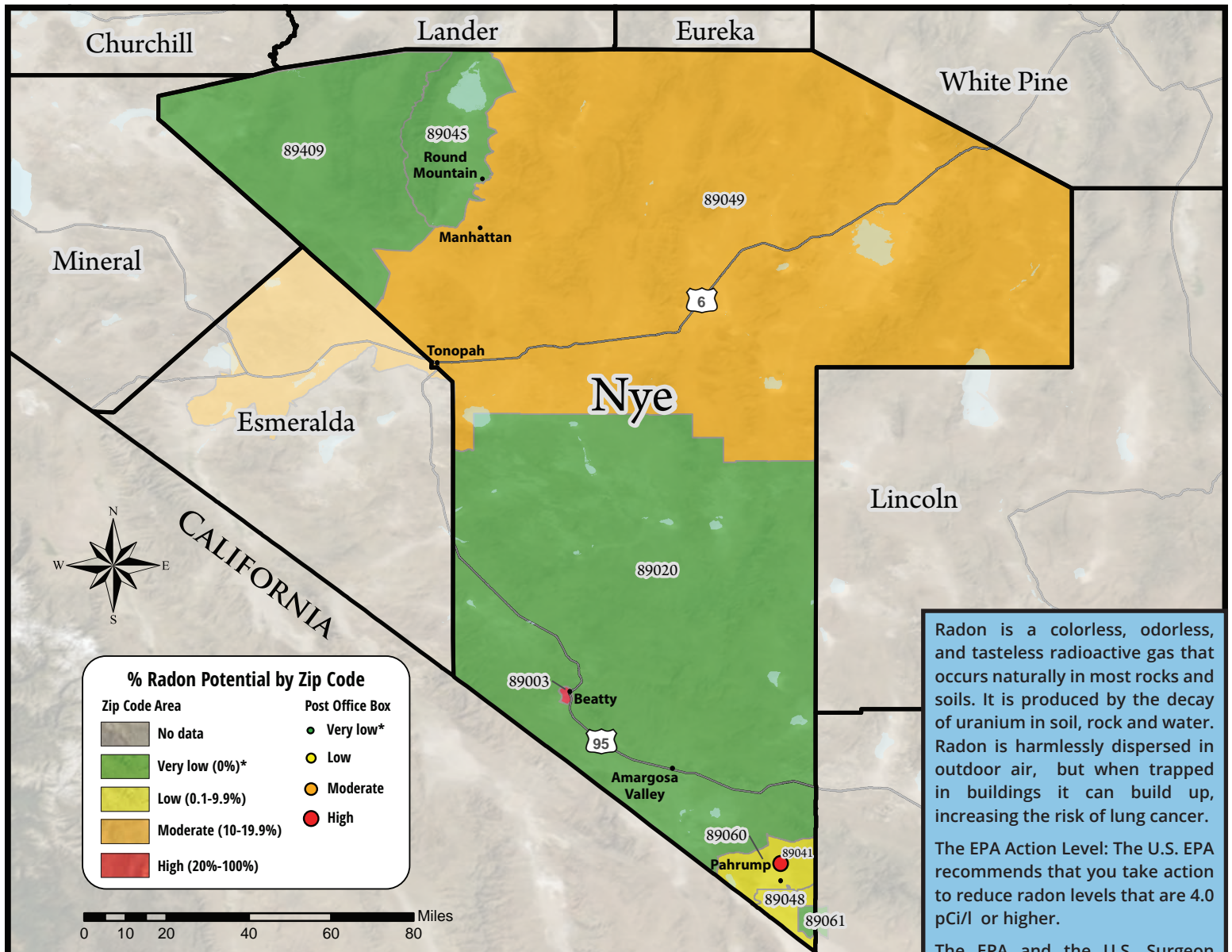


# Nye County

## Radon Potential by Zip Code



Radon is a colorless, odorless, and tasteless radioactive gas that occurs naturally in most rocks and soils. It is produced by the decay of uranium in soil, rock and water. Radon is harmlessly dispersed in outdoor air, but when trapped in buildings it can build up, increasing the risk of lung cancer.

The EPA Action Level: The U.S. EPA recommends that you take action to reduce radon levels that are 4.0 pCi/l or higher.

The EPA and the U.S. Surgeon General recommends all homes be tested for radon.

Nye County Zip Codes	89003 Beatty	89020 Amargosa Valley	P.O. Box 89041 Pahrump	89045 Round Mountain	89048 Pahrump	89049 Tonopah	89060 Pahrump	89061 Pahrump	89049 Gabbs	County Totals	
Total Number of Tests											FOI
Valid Tests	4	6	5	2	76	22	41	19	1	176	
Less than 4 pCi/l	3	6	4	2	70	18	39	19	1	162	
4 pCi/l and greater	1	-	1	-	6	4	2	-	-	14	
% Radon Potential	25.0%*	0%*	20.0%*	0%*	7.9%	18.2%	4.9%	0%	0%*	8.0%	
Range of Radon Levels in pCi/l											% of Total Tests
≥ 0 < 4	3	6	4	2	70	18	39	19	1	162	92%
≥ 4 < 10	1	-	1	-	6	4	2	-	-	14	8%
≥ 10 < 20	-	-	-	-	-	-	-	-	-	-	0%
≥ 20 < 50	-	-	-	-	-	-	-	-	-	-	0%
≥ 50 < 100	-	-	-	-	-	-	-	-	-	-	0%
≥ 100	-	-	-	-	-	-	-	-	-	-	0%
Radon Levels by pCi/l											
Average	3.03	1.65	2.12	1.25	1.85	2.26	1.64	1.33	1.70	1.82	
Highest	5.7	2.7	4.9	1.4	9.2	7.5	5.6	2.9	1.7		

### FOR MORE INFORMATION

Call the Radon Hotline:  
888-RADON10  
Visit: [www.RadonNV.com](http://www.RadonNV.com)

**Nevada**  
**Radon**  
Education Program

NevadaRadonEducation

@NevadaRadonProgram

\*Small sample size: more testing is needed to reference reliable radon potential for this area.

Zip codes in Nye County with no data: 89314

\*\*Note: Results are based on independently tested home data from program-provided kits, radon professionals and radon labs, from 1989 to June 30, 2018. When known, post-mitigation results are not included and usable results are valid tests, one per home, using the highest radon level on the lowest tested level of the home.



This publication was supported by the Nevada Division of Public and Behavioral Health through Grant Number K1-96963519-0 from the U.S. Environmental Protection Agency (EPA). Its contents are solely the responsibility of the authors and do not necessarily represent the official views of either the Division or the U.S. EPA.