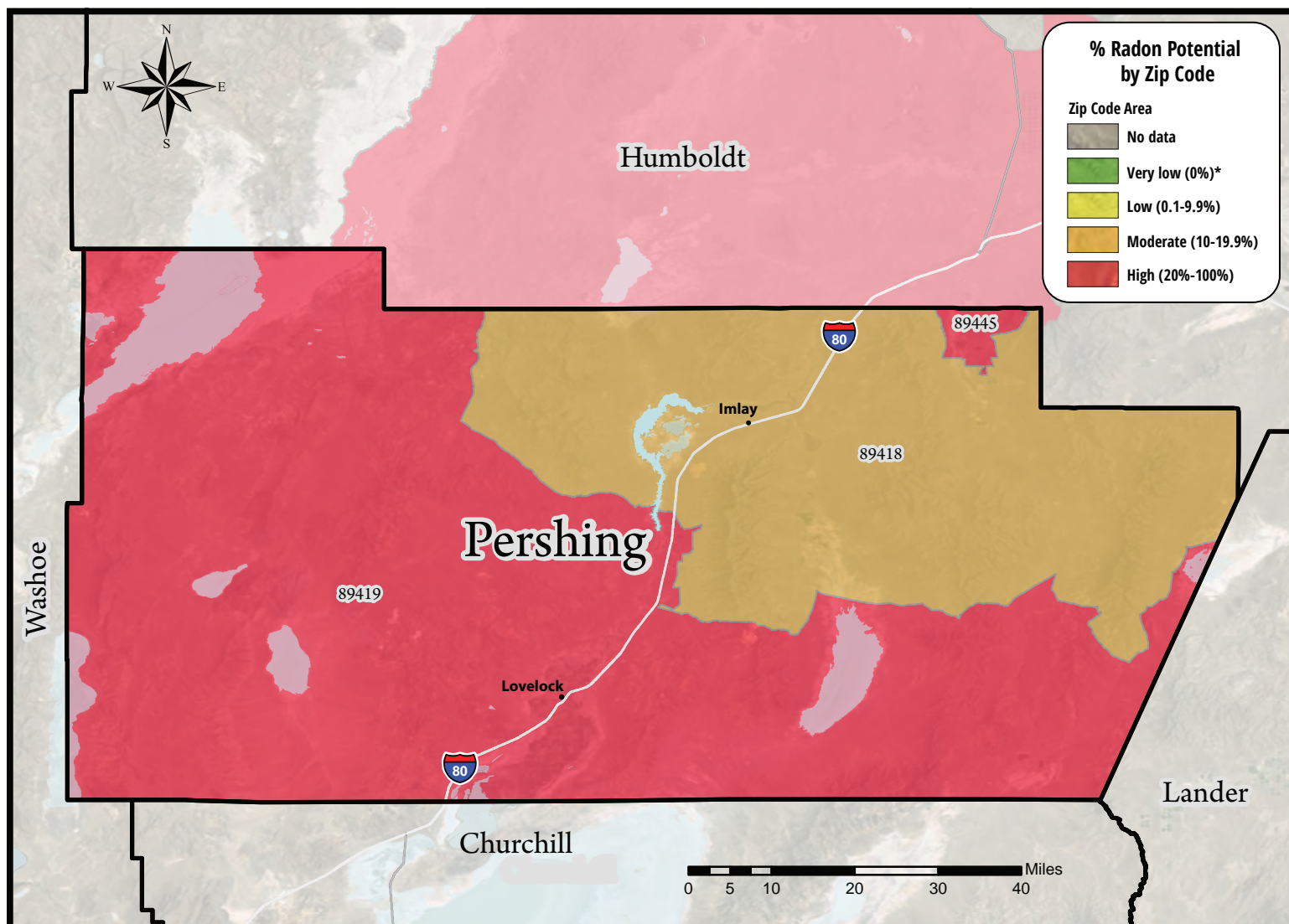


Pershing County

Radon Potential by Zip Code



Radon is a colorless, odorless, and tasteless radioactive gas that occurs naturally in most rocks and soils. It is produced by the decay of uranium in soil, rock and water. Radon is harmlessly dispersed in outdoor air, but when trapped in buildings it can build up, increasing the risk of lung cancer.

The EPA Action Level: The U.S. EPA recommends that you take action to reduce radon levels that are 4.0 pCi/l or higher.

The EPA and the U.S. Surgeon General recommends all homes be tested for radon.

Pershing County Zip Codes	89418 Imlay	89419 Lovelock	County Totals	
Total Number of Tests				
Valid Tests	8	197	205	
Less than 4 pCi/l	7	78	85	
4 pCi/l and greater	1	119	120	
% Radon Potential	12.5%*	60.4%	58.5%	
Range of Radon Levels in pCi/l			% of Total Tests	
≥ 0 < 4	7	78	85	41%
≥ 4 < 10	1	68	69	34%
≥ 10 < 20	-	40	40	20%
≥ 20 < 50	-	11	11	5%
≥ 50 < 100	-	-	-	0%
≥ 100	-	-	-	0%
Radon Levels by pCi/l				
Average	1.73	7.36	7.14	
Highest	4.6	42.7		

Map includes zip codes from neighboring counties	89445 Winnemucca (Humboldt)
Total Number of Tests	
Valid Tests	242
Less than 4 pCi/l	194
4 pCi/l and greater	48
% Radon Potential	19.8%
Range of Radon Levels in pCi/l	
≥ 0 < 4	194
≥ 4 < 10	39
≥ 10 < 20	4
≥ 20 < 50	4
≥ 50 < 100	1
≥ 100	-
Radon Levels by pCi/l	
Average	3.19
Highest	57.3

*Small sample size: more testing is needed to reference reliable radon potential for this area.

**Note: Results are based on independently tested home data from program-provided kits, radon professionals and radon labs, from 1989 to Mar. 31, 2019. When known, post-mitigation results are not included and usable results are valid tests, one per home, using the highest radon level on the lowest tested level of the home.

FOR MORE INFORMATION
Call the Radon Hotline:
888-RADON10
Visit: www.RadonNV.com

Nevada Radon Education Program

