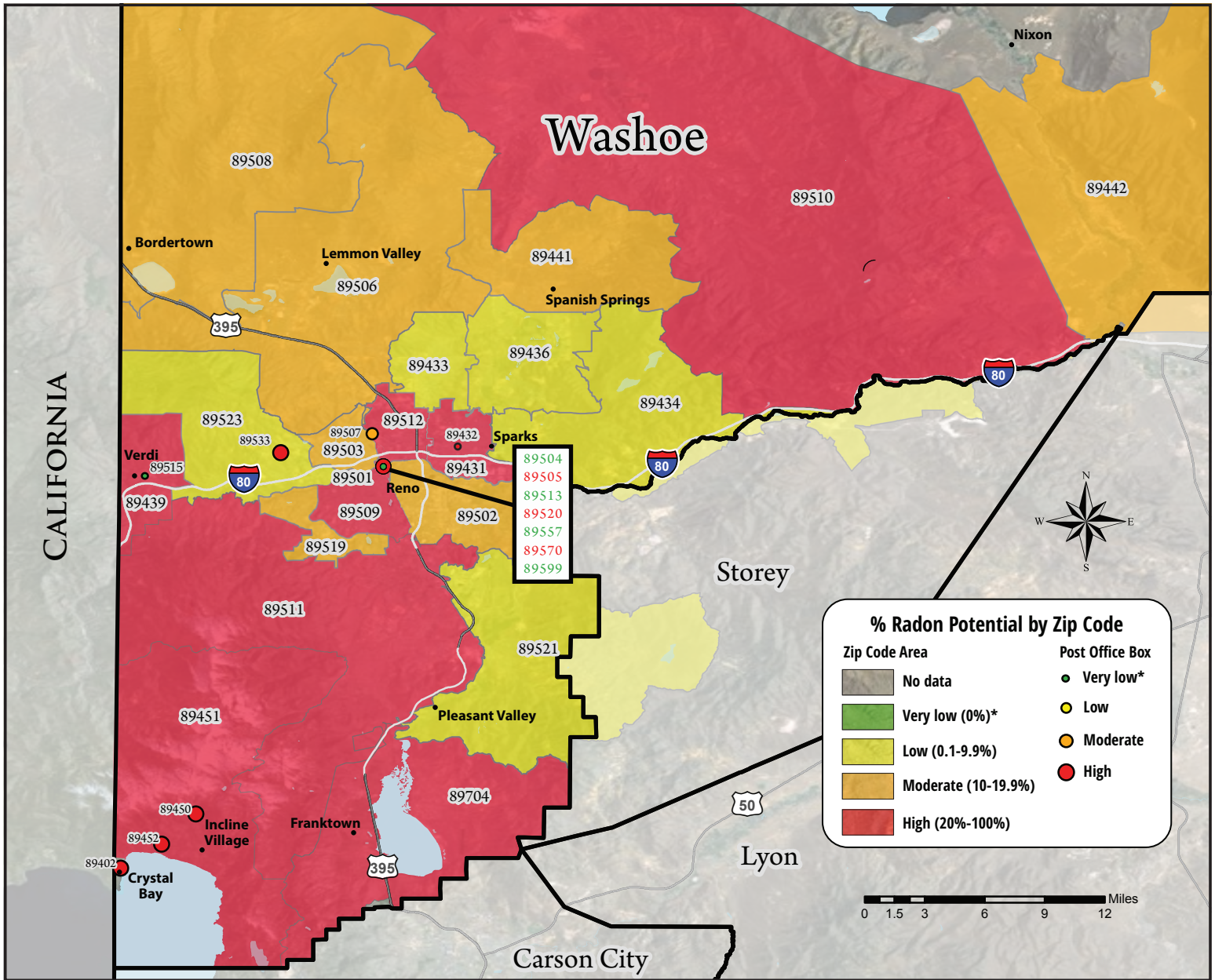


# Washoe County

## Radon Potential by Zip Code



Radon is a colorless, odorless, and tasteless radioactive gas that occurs naturally in most rocks and soils. It is produced by the decay of uranium in soil, rock and water. Radon is harmlessly dispersed in outdoor air, but when trapped in buildings it can build up, increasing the risk of lung cancer.

The EPA Action Level: The U.S. EPA recommends that you take action to reduce radon levels that are 4.0 pCi/l or higher.

The EPA and the U.S. Surgeon General recommends all homes be tested for radon.

\*Small sample size: more testing is needed to reference reliable radon potential for this area.  
Zip codes in Washoe County with no data: 89424, 89555, 89557 89595

\*\*Note: Results are based on independently tested home data from program-provided kits, radon professionals and radon labs, from 1989 to June 30, 2018. When known, post-mitigation results are not included and usable results are valid tests, one per home, using the highest radon level on the lowest tested level of the home.

Flip page over to view chart with data by zip code.

**FOR MORE INFORMATION**  
Call the Radon Hotline:  
888-RADON10  
Visit: [www.RadonNV.com](http://www.RadonNV.com)

**Nevada**  
**Radon**  
Education Program



# Washoe County

## Radon Potential by Zip Code

Washoe County Zip Codes	89501 Reno	89502 Reno	89503 Reno	P.O. Box 89504 Reno	P.O. Box 89505 Reno	89506 Reno	P.O. Box 89507 Reno	89508 Reno	89509 Reno	89510 Reno	89511 Reno	89512 Reno	P.O. Box 89513 Reno	89519 Reno	P.O. Box 89520 Reno	89521 Reno	89523 Reno	P.O. Box 89533 Reno
<b>Total Number of Tests</b>	32	518	483	2	6	454	24	188	1427	64	1332	227	1	2	3	645	747	4
<b>Valid Tests</b>	17	430	400	2	4	405	20	154	907	40	935	176	1	2	3	585	675	2
<b>Less than 4 pCi/l</b>	15	88	83	-	2	49	4	34	520	24	397	51	-	-	1	60	72	2
<b>4 pCi/l and greater</b>	17.0%	17.2%	17.2%	0%*	33.3%*	10.9%	16.7%	18.1%	36.4%	37.5%	29.8%	22.5%	0%*	13.4%	33.3%*	9.3%	9.6%	50.0%*
<b>% Radon Potential</b>	46.9%	17.0%	17.2%	0%*	33.3%*	10.9%	16.7%	18.1%	36.4%	37.5%	29.8%	22.5%	0%*	13.4%	33.3%*	9.3%	9.6%	50.0%*
<b>Range of Radon Levels in pCi/l</b>																		
≥ 0 < 4	17	430	400	2	4	405	20	154	907	40	935	176	1	2	3	585	675	2
≥ 4 < 10	10	65	73	-	1	45	4	27	330	15	321	38	-	-	1	54	56	1
≥ 10 < 20	3	19	7	-	1	4	-	4	128	6	64	10	-	4	-	5	11	1
≥ 20 < 50	2	3	3	-	-	-	-	3	50	2	11	3	-	1	-	1	5	-
≥ 50 < 100	-	1	-	-	-	-	-	-	9	1	-	-	-	-	-	-	-	-
≥ 100	-	-	-	-	-	-	-	-	3	-	1	-	-	-	-	-	-	-
<b>Radon Levels by pCi/l</b>																		
Average	6.63	2.86	2.56	1.95	4.73	2.15	1.74	3.15	5.68	5.60	3.72	3.34	0.50	1.15	2.24	2.01	2.15	5.40
Highest	30.7	64.3	42.0	2.0	16.1	17.3	5.2	41.2	195.0	51.0	155.6	34.1	0.5	1.7	26.7	20.5	34.0	10.1

Washoe County Zip Codes	P.O. Box 89570 Reno	P.O. Box 89599 Reno	89431 Sparks	P.O. Box 89432 Sparks	89434 Sparks	P.O. Box 89435 Sparks	89441 Sparks	P.O. Box 89450 Incline Village	89451 Incline Village	P.O. Box 89452 Incline Village	P.O. Box 89402 Crystal Bay	89405 Empire	89412 Gerlach	89433 Sun Valley	89439 Verdi	89442 Wadsworth	89704 Washoe Valley	County Totals
<b>Total Number of Tests</b>	2	4	348	5	380	3	816	90	1032	10	52	3	5	217	123	7	195	10164
<b>Valid Tests</b>	1	4	278	4	370	3	760	60	657	7	34	3	3	202	66	6	115	7940
<b>Less than 4 pCi/l</b>	1	-	70	1	10	-	56	30	375	3	18	-	2	15	57	1	80	2224
<b>4 pCi/l and greater</b>	50.0%*	0%*	20.1%	20.0%*	2.6%	0%*	6.9%	33.3%	36.3%	30.0%	34.6%	0%*	40.0%*	6.9%	46.3%	14.3%*	41.0%	21.9%*
<b>% Radon Potential</b>	50.0%*	0%*	20.1%	20.0%*	2.6%	0%*	6.9%	33.3%	36.3%	30.0%	34.6%	0%*	40.0%*	6.9%	46.3%	14.3%*	41.0%	21.9%*
<b>Range of Radon Levels in pCi/l</b>																		
≥ 0 < 4	1	4	278	4	370	3	760	60	657	7	34	3	3	202	66	6	115	7940
≥ 4 < 10	-	-	58	1	10	-	46	27	312	3	15	-	2	15	32	1	68	1725
≥ 10 < 20	1	-	10	-	-	-	8	2	53	-	3	-	-	-	11	-	11	369
≥ 20 < 50	-	-	2	-	-	-	1	1	8	-	-	-	-	-	8	-	1	105
≥ 50 < 100	-	-	-	-	-	-	1	-	2	-	-	-	-	-	3	-	-	18
≥ 100	-	-	-	-	-	-	-	-	-	-	-	-	-	-	3	-	-	7
<b>Radon Levels by pCi/l</b>																		
Average	6.20	2.78	2.94	2.80	1.49	1.10	2.05	3.67	4.15	3.10	4.02	1.53	2.92	1.71	10.20	2.47	4.14	3.35
Highest	11.1	3.3	25.4	5.0	8.2	1.6	55.3	29.7	91.3	9.0	17.9	2.0	5.7	6.6	144.4	5.3	24.0	10.1