

# Clover Clips



**EXTENSION**  
College of Agriculture,  
Biotechnology & Natural Resources



4-H Youth  
Development

Monthly 4-H Newsletter for Carson City,  
Douglas, Storey, and Washoe Counties

## Access, Equity, and Belonging Series Begins

The 4-H Program Leaders Working Group for Access, Equity, and Belonging (AEB) supports the 4-H Youth Development system in reaching our 4-H Grows Vision. 4-H will embrace the rich diversity of youth, families, and communities that comprise our nation. We will grow our organization in ways that leverage that diversity to improve the economic, environmental, and social conditions in which people live. Cooperative Extension and 4-H have an opportunity to close the gap in well-being and economic mobility as we undertake our bold goal to engage 10 million youth, reflecting the diversity of the communities we serve by 2027. Uniting toward an inclusive, diverse, and equitable 4-H is the fuel we need to increase access for all youth, families, and communities—in every town, every city, and every corner of America. The AEB Committee (AEB) aims to increase the capacity of 4-H Youth Development and Cooperative Extension to equitably engage underrepresented and marginalized populations across the country. The AEB committee is composed of the following champion groups:

- Immigrant and Refugee Youth
- LGBTQ+ Youth/Community
- Mental Health and Well-being
- Youth Experiencing Homelessness
- Youth in Foster Care
- Youth Living in Poverty
- Racial and Ethnic Youth Groups:
  - African American Youth
  - Asian American Youth
  - Native American/Pacific Islander Youth
  - Latinx Youth (Latinx Advisory Committee)
- Youth with Disabilities

The following is a quick snapshot of each of the Champion Groups. Clover Clips will highlight one of these champion groups each month of the coming year.

**AFRICAN AMERICAN YOUTH:** Black or African American refers to a person having origins in any of the Black racial groups of Africa. It also includes Afro-Caribbean people, such as Haitians and Jamaicans.

- African American youth between the ages of 5-17

are 18.3% of the black population (41,393,491).

- Social and educational inequities are systemic issues due to high rates of poverty. 36% of Black children live in poverty.

- More than 75% of Black children born between 1985 and 2000 grew up in “high disadvantage” neighborhoods.

**IMMIGRANT YOUTH:** Youth under the age of eighteen residing in the United States who were not U.S. citizens at birth.

- In 2016, more than 17 million immigrants lived in the U.S.

- By 2050, immigrant youth are projected to make up 1/3 (33M) of more than 100 million U.S. youth.

- Immigrants are important to US international competitiveness, especially in technology-intensive and service industries.

**LGBTQ+ YOUTH:** Youth who identify as Lesbian, Gay, Bisexual, Transgender, Queer/Questioning, and all other marginalized

sexes, gender identities, gender expressions, and sexual orientations.

- 8% of high school-aged youth identify as LGB

- 0.7% of high school-aged youth identify as transgender.

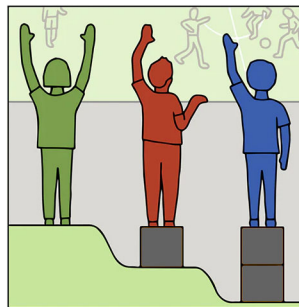
- 2.7% of high school-aged youth identify outside of the male/female binary (including transgender)

- LGBTQ+ youth are more likely to be assaulted, bullied, experiment with alcohol and drugs, attempt suicide, & experience homelessness.

- LGBTQ+ youth thrive, are resilient, and are more likely to experience positive health outcomes when they have supportive and accepting families; they have access to culturally competent and affirming mental health care; and they participate in programs with inclusive curriculum, policies, and practices, and are supported by trained and competent staff.

**LATINX YOUTH:** Latinx youth are very diverse and may identify with racial, ethnic, or cultural groups from Central, South, and North America and the Caribbean.

- Hispanics constituted 18.3 percent of the nation’s total population, making people of Hispanic origin the nation’s largest ethnic or racial minority.



(Continued on Page 2)

---

## AEBC Series Highlights

(Continued from Page 1)

- Latinx culture places family at its center, creating strong bonds to support all members. Over the past decade, high school and college attendance rates have increased for Latinx youth.

**MENTAL HEALTH AND WELL-BEING:** Mental health includes emotional, psychological, and social well-being. It affects how we think, feel, and act. It also helps to determine how we handle stress, relate to others, and make decisions. Biological factors, life experiences, and environments all contribute to mental health.

- 1 in 6 U.S. youth aged 6-17 experience mental illness each year. 35% of individuals with mental illness started experiencing symptoms by age 15.

- Suicide is the 2nd leading cause of death in individuals aged 10-34.

**YOUTH LIVING IN POVERTY:** Children ages 0-18 who live in families with income below the Federal Poverty Level.

- In 2017, 18% of children (13 million) lived in families with incomes below the poverty line.

- This rate fell from 21% (15 million) in 2015.

**YOUTH EXPERIENCING HOMELESSNESS:** Youth under age 18 who lack adequate nighttime residence at some point during the school year. This could include youth living in homeless shelters and transitional housing, hotels or motels, unsheltered settings, and also couch surfing, doubling up, or sharing housing with others due to a loss of housing, economic hardship, or a similar reason.

- In 2018, 1.36 million students (1 in 38 students) were identified by schools as youth experiencing homelessness.

- While rural and urban youth experience similar rates of homelessness, subpopulations of youth, specifically youth of color, parenting youth, and lesbian, gay, bisexual, transgender, and queer (LGBTQ) youth are at a disproportionately higher risk for homelessness including LGBTQ youth (120%), as well as African American (83%) and Hispanic (33%) youth.

**YOUTH IN FOSTER CARE:** Children are placed in foster care when a child protective services worker and a court determine that it is not safe for the child to remain at home because of the risk of maltreatment, including neglect and physical or sexual abuse.

- Foster care arrangements include nonrelative foster homes, relative foster homes (also known as “kinship care”), group homes, institutions, and pre-adoptive homes.

- 25% of youth become homeless after exiting foster care, and only 3% of youth in foster care graduate from college.

**YOUTH WITH DISABILITIES** Disability is defined as someone who (1) has a physical or mental impairment that substantially limits one or more “major life activities,” (2) has a record of such an impairment, or (3) is regarded as having such an impairment.

- 13.2 percent of individuals aged 3-21 are served under the Individuals with Disabilities Education Act (IDEA).

- Adolescents with disabilities, like all adolescents, thrive when they believe they can meet challenges. Providing opportunities for adolescents to act and overcome obstacles can help adolescents increase self-efficacy.

*Excerpted from National Trends & 4-H Snapshot, from the 4-H Program Leaders Working Group of Access, Equity, and Belonging*

## Annual 4-H Tack Sale has "Clinic"

Do you have good quality horse tack or equipment that you want to sell? Consider the Annual 4-H Consignment Tack Sale on Sunday, February 18, 2024, from 8 a.m. to 3 p.m. It will be at the Reno- Sparks Livestock Events Center Main Arena - 1350 N. Wells Ave.

Silver Knolls Spurs 4-H Club is sponsoring the event to benefit the Washoe County 4-H Program. They will sell your good quality, new or used horse-related items on consignment. Consigner receives 80%, while 4-H retains 20% of the selling price. Donations of tack are welcome. This sale is open to the public to buy and sell.

Please note: household items, broken or missing tack items, ripped or torn items and used helmets will not be accepted.

If you are looking to buy, come browse through the great selection of horse-related items.

For more information and pricing tickets, please call Linda at 775-972-7241 or 775-560-0612; Amy at 775-972-7241 or 702-981-3062; or email [sks4hclub@gmail.com](mailto:sks4hclub@gmail.com).

4-H Horse Project members who help at the Tack Sale set-up on Saturday can also participate in a fun Scavenger Hunt Clinic. It is a great way to learn about tack and horse equipment.

4-H dress or Club 4-H Shirt required. There won't be any horses present, so there won't be a need to bring a helmet.

RSVPs are required by Thursday, February 15 To RSVP or for more information, please contact Sam Mitchell at [samm@unr.edu](mailto:samm@unr.edu) or 775-336-0259.



## Mounted Clinic in Early March

Mark your Calendars and get your horse and gear ready. Washoe County 4-H Horse Leaders will present the first Mounted Clinic for 2024 on March 9, at the Reno Sparks Livestock Events Center.

The presentations and sessions have not been determined yet, but there will be opportunities to work on your horsemanship.

As in past years, a flyer with the clinic schedule and descriptions will be emailed out to all 4-H Horse Project members in the Washoe area. An RSVP will be required to attend.

Mounted clinics require all participants to wear an ASTM-SEI approved equestrian helmets. Proper attire, a club 4-H shirt or 4-H dress (a white long-sleeve shirt with green tie or scarf, long pants or jeans and boots), is also required.

## NJLS Weighing and Tagging

The deadline to weigh and tag your livestock project animal for the Nevada Junior Livestock Show (NJLS) is getting closer.

All members planning on showing an animal must order their ear tags in early February. The tagging deadline for NJLS is March 1.

**Douglas County** 4-H will do their sheep and swine weighing and tagging on Saturday, February 24, at the DC Fairgrounds. Carson City and Storey County will tag at the same time. All animals must be there by 9 a.m.

**Washoe County** 4-H will do their weighing and tagging of sheep, swine and meat goats on February 25, at the Reno/Sparks Livestock Events Center Cutting area (located behind Pavilion).

All show entries are due to the NJLS office by April 1. YQCA certifications must accompany entry forms. If you missed the in-person training, it can be done online at [yqca.org](http://yqca.org).

## Carson City/Storey 4-H Fabric Sale

The 2024 4-H Fabric Sale is Saturday, February 3, 9 a.m.- 4 p.m. and Sunday, February 4, 9 a.m.- 12 p.m. at Fuji Park Exhibit Hall in Carson City. Proceeds from the sale support 4-H programs & scholarships in Carson City and Storey County. The sale includes fabric, patterns and other sewing materials.



Please contact Kristina Williams at [kristinawilliams@unr.edu](mailto:kristinawilliams@unr.edu) or 775-887-2252 or for more information.

## 4-H Small Animal Show in March

The Washoe County 4-H Small Animal Show with Static Exhibits (formerly the Washoe County 4-H Cavy, Poultry, Dog, Herpetology and Rabbit Show), sponsored by Washoe County 4-H Small Animal Leaders, is March 23, 2024.

The show is at the Reno-Sparks Livestock Events Center Pavilion, 1350 N. Wells Ave. in Reno.

Species check-ins begin at 8:00 a.m. with shows beginning at 9:30 a.m.

Youth will be showing Rabbits, Cavy (Guinea Pigs), Poultry, Dogs, Reptiles and Amphibians.

**New this year:** In addition to shows for Cavy, Poultry, Dogs, Rabbits, and Herpetology, the Washoe County Small Animal show (March 23, 2024) will also provide a place for static entries.

4-H'ers from counties surrounding Washoe County are invited to enter any items they have created this year from posters and art to photos, sewing projects, or food.

Keep an eye on your email for more information and entry forms around mid-February or reach out to Kelsey Conklin at the Washoe County 4-H office [kconklin@unr.edu](mailto:kconklin@unr.edu) for more information.

## Nevada Ag Foundation Scholarships

The Nevada Agricultural Foundation (NAF) is pleased to offer their Education Assistance Awards (EAA) program to students interested in pursuing higher education in agriculture. To acquire the EAA information and application forms, please visit their website at: <https://nevadaagriculturalfoundation.org/>

On the home page, click on "FORMS" and it will take you to the page with information and downloads that are needed to apply for our awards. Files that will be of interest to students are the Introductory Letter, the Application Checklist, and the NAF Educational Assistance Award Application.



The NAF is planning to award over \$50,000 in Educational Assistance Awards to deserving Nevada students. The Scholarship Committee will give consideration only to applicants who document intent to follow an agricultural curriculum. Award recipients must enroll within the year awarded (by Fall semester) or forfeit the award. If a student cannot meet requirements for the award during any year of the award, the award will be forfeited. The recipient is eligible to reapply when they can meet the requirements. Some awards are restricted to major fields of study within an agricultural curriculum. Please note that the applications must be postmarked by **March 15, 2024**.

Applicants must provide complete forms and transcripts that comply with the items on the Application Checklist - worthy applicants will be eliminated from consideration if they have failed to sign their application and/or send their transcript.

Mail completed applications to:

**Nevada Ag. Foundation**  
**Educational Assistance Awards**  
**P. O. Box 8089**  
**Reno, NV 89507**

Notification to successful applicants will occur in April 2024.

## Herpetology Clinic March 2

The Cold-Blooded Critters 4-H Herpetology Club will be hosting a Herpetology Clinic at the Reno Sparks Livestock Events Center Pavilion (1350 N. Wells Avenue in Reno) on March 2, 2024 from 9 a.m. to 12 p.m. The clinic is open to all 4-H Reptile Project members. Sessions will include:

- Proper Husbandry for Your Reptiles: learn about proper lighting, heat, humidity, nutrients and more.
- How to Show at Your 4-H Herpetology Show: tips on how to present your animals to judges, show etiquette, and attire.
- Keep it Clean! How to Sanitize Safely and Why: safe products to use, and the importance of sanitation.



Members must RSVP by February 23, 2024. For more information or to RSVP text 775-303-2541 or go online to [coldbloodedcritters4H@gmail.com](mailto:coldbloodedcritters4H@gmail.com).

## Reno Rodeo Foundation Scholarship

The Reno Rodeo Foundation has distributed scholarships annually to Northern Nevada eligible students, since 1986. Over the years the foundation has helped fund hundreds of students to further their educational career goals.

All interested applicants are encouraged to carefully review the eligibility requirements and the application guidelines before applying. The number of scholarship recipients will vary based on the number of qualified applications received and the funding designated by the Reno Rodeo Foundation Board of Trustees.



A Reno Rodeo Foundation Scholarship award supports tuition costs and school-related expenses as provided by the educational institution to support the upcoming school year. Students who intend to enroll in an educational Nevada System of Higher Education College or University institution or a Career College or Vocational licensed by the State of Nevada Commission on Postsecondary Education accredited as recognized by the U.S. Department of Education are encouraged to apply.

Application Deadline: February 8, 2024 at 5:00 p.m. All applicants will be notified via email or by mail on or before April 26, 2024.

To get application information, guidelines and forms, go online to the foundation's website at <https://www.renorodeofoundation.org/scholarships/>

## Livestock Care and Primal Cuts Zoom Workshop

Are you getting ready for your 2024 4-H Livestock Project? Learn about how to keep your livestock healthy while at a show or fair by joining the Livestock Care and Primal Cuts Zoom Workshop on February 7, 2024 at 5:30 p.m. (Zoom option only).

After the session on how to keep your project animal healthy, State 4-H Livestock Coordinator Rebecca Glocknitzer will also go over the primal cuts of the carcass and how to identify between beef, pork and lamb.

Registration Information: Please use the following link to register over Zoom.

<https://forms.office.com/r/6vVYRLH0cJ>

For more information, contact Rebecca at [rglocknitzer@unr.edu](mailto:rglocknitzer@unr.edu).

## 4-H Livestock Contest Series for 2024

Here are this year's remaining 4-H Livestock Contest Series events:

- **February 9 and 10-** Churchill County Livestock Judging Contest
- **March 24-** Lyon County Livestock Judging Contest
- **May 8-** State Livestock Judging Contest Washoe County
- **August 8-** Clark County Skillathon and Quiz Bowl Contest
- State Skillathon and Quiz Bowl Contest at **Expo**

For more information, please contact: Rebecca Glocknitzer at [rglocknitzer@unr.edu](mailto:rglocknitzer@unr.edu).

### Northern Area/ Western February Dates to Remember

**Feb 8 -** Reno Rodeo Scholarship  
Application Deadline (5 p.m.)

**Feb 18 -** Annual 4-H Tack Sale, RSLEC

**Feb 19 -** Presidents' Day (Offices Closed)

Find it in  [4-h.org/clover/](https://4-h.org/clover/)

Got a question about 4-H, school, friendships, or family? Ask a 4-H Mentor! Every month one of our 4-H mentors will post a blog answering all your questions. Our mentors support the 4-H community by serving as role models, educators, life coaches and friends.

4-H members 13 years of age and older can go online to <https://4-h.org/support/ask-a-mentor/> to send a question to the mentors at 4-H.org.

The site also has quite a few articles and activities on a variety of Healthy Living subjects.

**4-H is a program of University of Nevada, Reno Extension**

### CLOVER CLIPS PARTICIPATING COUNTY OFFICES

**Carson City/Storey County**  
775-887-2252  
2621 Northgate Lane, Suite 15  
Carson City, NV 89701

**Douglas County**  
775-782-9960  
1325 Waterloo  
Gardnerville, NV 89410

**Washoe County**  
775-336-0259  
4955 Energy Way  
Reno, NV 89502

The University of Nevada, Reno is committed to providing a place of work and learning free of discrimination on the basis of a person's age (40 or older), disability, whether actual or perceived by others (including service-connected disabilities), gender (including pregnancy-related conditions), military status or military obligations, sexual orientation, gender identity or expression, genetic information, national origin, race (including hair texture and protected hairstyles such as natural hairstyles, afros, Bantu knots, curls, braids, locks, and twists), color, or religion (protected classes). Where discrimination is found to have occurred, the University will act to stop the discrimination, prevent its recurrence, remedy its effects, and discipline those responsible.