

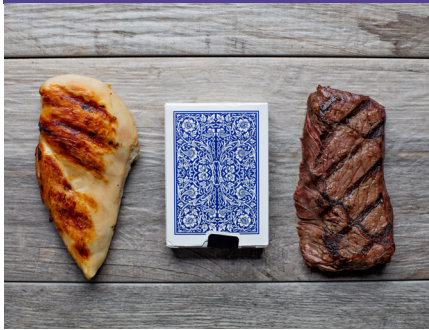
Servings

Serving size matters!

Make sure to eat adequate servings from all five food groups. Visit [MyPlate.gov](https://www.MyPlate.gov) to see how many servings are right for you.

(Servings: Based off of a 2,000-calorie diet)

Examples of 3-ounce protein equivalents (5.5-ounce equivalents per day)



Meat the size of a deck of cards



3 ounces of canned meat



Fish the size of a smart phone

Examples of 1-ounce protein equivalents (5.5-ounce equivalents per day)



1 egg



2 tbsp of hummus



½-ounce of nuts
(about 12 almonds)



1 tbsp of peanut butter



¼ cup of beans or peas



¼ cup of pinto beans

Did you know?

2 cups of cottage cheese are equal to one cup of milk or ⅓ cup of shredded cheese.

By Anne R. Lindsay, Ph.D., M.S., FACS M ; Macy Helm; and Jennifer M. Wood, M.S., RDN, LNHA, CSG

Copyright © 2025, University of Nevada, Reno Extension.

The University of Nevada, Reno is committed to providing a place of work and learning free of discrimination on the basis of a person's age (40 or older), disability, whether actual or perceived by others (including service-connected disabilities), gender (including pregnancy related conditions), military status or military obligations, sexual orientation, gender identity or expression, genetic information, national origin, race (including hair texture and protected hairstyles such as natural hairstyles, afros, bantu knots, curls, braids, locks and twists), color, or religion (protected classes). Where discrimination is found to have occurred, the University will act to stop the discrimination, to prevent its recurrence, to remedy its effects, and to discipline those responsible.

A partnership of Nevada counties; University of Nevada, Reno; and the U.S. Department of Agriculture.



University of Nevada, Reno
Extension
College of Agriculture,
Biotechnology & Natural Resources

Examples of 1-cup vegetable equivalents (2.5-cup equivalents per day)



Vegetable the size of a light bulb



2 cups of raw spinach or leafy greens



2 large stalks of celery or carrots



1 cup of fresh, frozen or canned vegetables

Examples of 1-cup fruit equivalents (2-cup equivalents per day)



1 piece of fruit the size of a baseball or 2 small fruits, such as plums



1 cup of canned fruit, frozen fruit, or 100% fruit juice



½ cup of dried fruit



1 cup of green grapes

Examples of 1-ounce whole grain equivalents (6-ounce equivalents per day)



½ cup of cooked pasta, rice or oatmeal



1 slice of bread, ½ of a hamburger bun or ½ of an English muffin



1 cup of cereal or 5 crackers

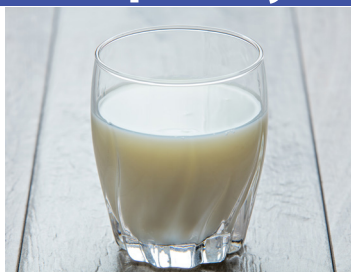


1 small pancake or a small tortilla

Examples of 1-cup dairy equivalents (3-cup equivalents per day)



Block cheese cut to the size of 2 dominoes, 1 slice from packaged cheese, or 1 ½ cheese sticks



1 cup of milk



⅓ cup of shredded cheese



1 cup of yogurt or 2 cups of cottage cheese

Ask yourself with every meal, "Did I get enough servings of each food group?"